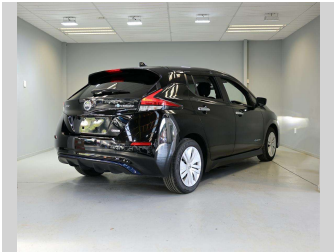


2021 Nissan Leaf 40S, Reverse Camera, Cruise



Purchase Price

\$16,595

Includes GST

Excludes on-road costs of \$795

Indicative repayments

\$142.91 per week*

Based on a 36 month term & no deposit.

Total repayments (156) = \$22,294.65

finance

NOW

Gain peace of mind with Mechanical Breakdown Insurance. Ask us how.

autosure

INSURANCE

Top features

» ABS Braking

» ABS Braking w/ EBD

» Air Bag(s)

» Bluetooth

» Car Alarm

» Car Stereo

» cruise control

» Cruise Control

» Electric Windows

» Heated Seats

» Immobiliser

» Power Steering

» Push Start

» Rear Wiper

» Reversing Camera

» Reversing Camera

» smart key

» Spoiler

Body Style	Reg No.
5 door, Hatchback	-
Odometer	Ext Colour
54,680 km	Black
Engine	History
0 cc	-
Fuel Type	Seats
Electric	-
Transmission	CO2 Emissions
Automatic	★★★★★☆
Wheels	0 grams/km
-	Energy Economy
VIN	★★★★★☆
7AT0DH8KX25102519	Annual fuel cost not available
Interior	Cost per year is an estimate based on electricity price of \$0.27 per kWh and an average distance of 14000 km. Includes Road User Charges (RUC). Emissions and Energy Economy figures standardised to 3P WLTP.
-	Stock ID: 1854
Safety	
<div><div><div>5 star safety rating</div></div></div>	
Based on 2024 VSRR rating	



Auto Legend - Albany | Phone 092186379 | Email sales@autolegend.co.nz
Albany, Auckland
http://www.autolegend.co.nz/

* Auto Legend - Albany is not a lender nor a financial adviser. Any amounts displayed should not be seen as an offer of finance or taken as financial advice. The interest rate, fees and loan term used in this calculation may not actually represent those available from lenders. Actual interest rates, fees and loan terms will vary per lender and are typically based on an assessment of your credit risk and responsible lending criteria. Any repayment amounts displayed are indicative only and have been calculated using several other indicative inputs. The interest rate used in this calculation is an arbitrary 13.95%, however exact interest rates vary per lender. The term of the loan used in this calculation is 36 month. Exact terms available vary per lender although options typically include 6, 12, 18, 24, 36, 48 and 60 months. This calculation also includes two typical mandatory fees charged by lenders. These are an account admin fee of \$10.00 per month (other payment frequencies may be available) and a one-off establishment fee of \$450.00. Typically, this fee can be paid upfront or, as in this calculation, be capitalised over the contract term, ie. included in the loan amount. These fees can vary per lender and other non-mandatory fees and charges may also apply. The total amount of repayments has been calculated by multiplying 156 weekly repayments (based on a 36 month term) by the weekly repayment amount of \$142.91 which equals \$22,294.65. This calculator does not consider any of your own personal circumstances and we strongly suggest you seek budgeting advice prior to committing to any loan contract. Responsible lending criteria and lender terms and conditions will likely apply to any finalised loan contract. Proof of security and/or vehicle insurance may also be required before proceeding.