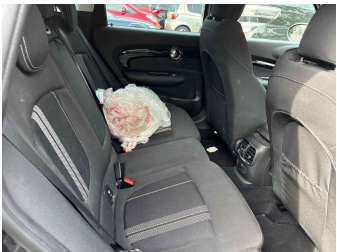
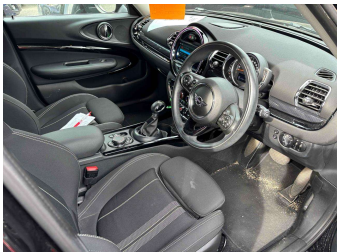


# 2019 Mini Clubman New Shape, Cooper S, Cruise



Purchase Price

Includes GST  
Excludes on-road costs of \$595

POA

Indicative repayments

\$10.54 per week\*

Based on a 36 month term & no deposit.  
Total repayments (156) = \$1,644.85

finance NOW

Gain peace of mind with  
Mechanical Breakdown  
Insurance. Ask us how.

autosure  
INSURANCE

Top features

» cruise control

» Reversing Camera

Body Style	Reg No.
5 door, Hatchback	-
Odometer	Ext Colour
95,037 km	Black-two tone
Engine	History
2000 cc	-
Fuel Type	Seats
Petrol	-
Transmission	CO2 Emissions
Automatic	-
Wheels	Energy Economy
-	-
VIN	-
-	
Interior	
-	
Safety	
-	
	Stock ID: 1961