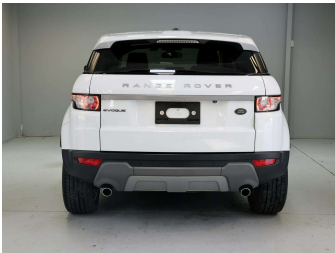
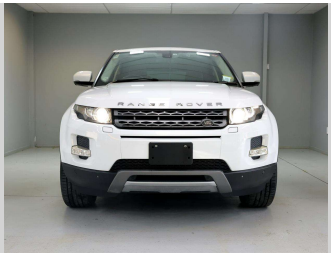


# 2013 Land Rover Range Rover Evoque 2.0P Turbo



Purchase Price

\$23,985

Includes GST

Excludes on-road costs of \$795

Indicative repayments

\$201.16 per week\*

Based on a 36 month term & no deposit.

Total repayments (156) = \$31,380.8

finance

NOW

Gain peace of mind with Mechanical Breakdown Insurance. Ask us how.

autosure

INSURANCE

Top features

None Listed

Body Style

5 door, RV/SUV

Odometer

61,015 km

Engine

2000 cc

Fuel Type

Petrol

Transmission

Automatic

Wheels

-

VIN

SALVA2AGXDH822380

Interior

-

Safety

Safety rating not available

Reg No.

-

Ext Colour

White

History

-

Seats

-

CO2 Emissions

★★★★☆

201 grams/km

Energy Economy

★★☆☆☆☆

Annual fuel cost not available

Cost per year is an estimate based on petrol price of \$2.80 per litre and an average distance of 14000 km. Emissions and Energy Economy figures standardised to 3P WLTP.

Stock ID: 1710