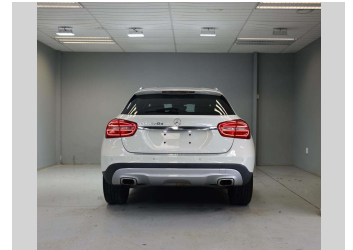
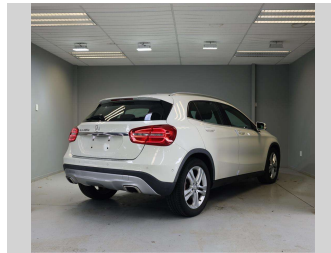



2017 Mercedes-Benz GLA 220 d NZ New, Diesel



Purchase Price **\$18,995**
Includes GST, Registration & Licensing

Indicative repayments
\$155.56 per week*
Based on a 36 month term & no deposit.
Total repayments (156) = **\$24,268.03**



Gain peace of mind with
Mechanical Breakdown
Insurance. **Ask us how.**



Top features

- » 360 Cameras
- » 4 New Tyres
- » ABS Braking
- » ABS Braking w/ EBD
- » AC
- » Air Bag(s)
- » Air Con
- » Air Conditioning
- » Alloys
- » Auto Lights
- » Automatic Lights
- » Automatic Wipers
- » Bluetooth
- » Body Kit
- » Body Kit (Aero)
- » Body Kit (Factory)
- » Car Alarm
- » Car Stereo

Body Style
RV/SUV

Odometer
102,856 km

Engine
2143 cc

Fuel Type
Diesel


Transmission
Automatic

Wheels
Factory Alloys

VIN
WDC1569032J365976

Interior
Black, Leather

Safety



Based on 2024 UCSR rating for 14-19 models

Reg No.
LJG714

Ext Colour
White

History
NZ New

Seats
Leather

CO2 Emissions
★★★★☆
141 grams/km

Energy Economy
★★★★☆☆
Annual fuel cost of \$2,580
5.4L per 100km

Cost per year is an estimate based on diesel price of \$2.00 per litre and an average distance of 14000 km. Includes Road User Charges (RUC). Emissions and Energy Economy figures standardised to 3P WLTP.

Stock ID: 2015



Auto Legend - Glenfield | Phone 021 199 3585 | Email sales@autolegend.co.nz
141 Wairau Road, Wairau Valley, Auckland 0627, New Zealand
www.autolegend.co.nz

* Auto Legend - Glenfield is not a lender nor a financial adviser. Any amounts displayed should not be seen as an offer of finance or taken as financial advice. The interest rate, fees and loan term used in this calculation may not actually represent those available from lenders. Actual interest rates, fees and loan terms will vary per lender and are typically based on an assessment of your credit risk and responsible lending criteria. Any repayment amounts displayed are indicative only and have been calculated using several other indicative inputs. The interest rate used in this calculation is an arbitrary 13.95%, however exact interest rates vary per lender. The term of the loan used in this calculation is 36 months. Exact terms available vary per lender although options typically include 6, 12, 18, 24, 36, 48 and 60 months. This calculation also includes two typical mandatory fees charged by lenders. These are an account admin fee of \$10.00 per month (other payment frequencies may be available) and a one-off establishment fee of \$450.00. Typically, this fee can be paid upfront or, as in this calculation, be capitalised over the contract term, ie. included in the loan amount. These fees can vary per lender and other non-mandatory fees and charges may also apply. The total amount of repayments has been calculated by multiplying 156 weekly repayments (based on a 36 month term) by the weekly repayment amount of \$155.56 which equals \$24,268.03. This calculator does not consider any of your own personal circumstances and we strongly suggest you seek budgeting advice prior to committing to any loan contract. Responsible lending criteria and lender terms and conditions will likely apply to any finalised loan contract. Proof of security and/or vehicle insurance may also be required before proceeding.